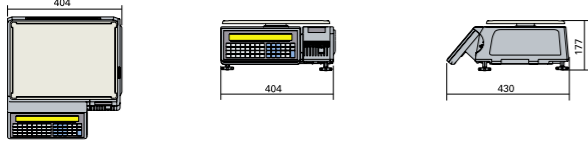
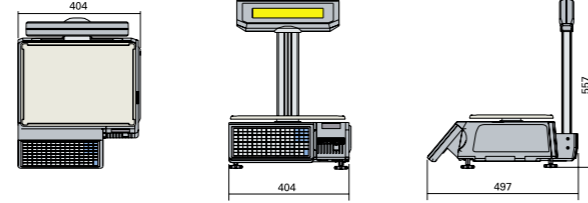
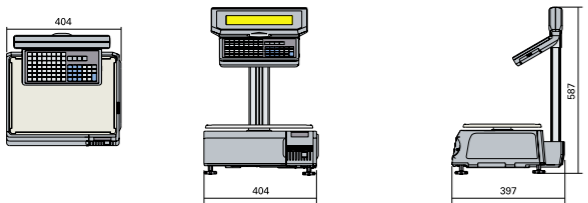
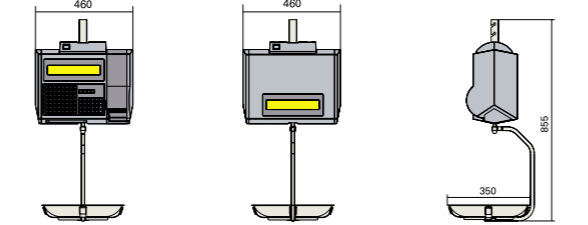
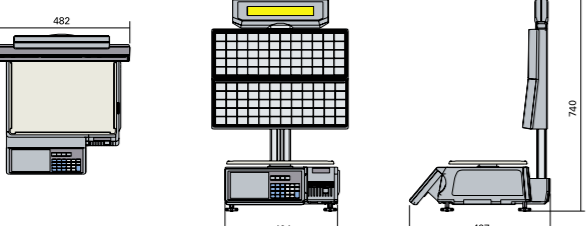


External Dimension (mm)

SM-500MK4EB (Bench) 	SM-500MK4EP (Pole) 
SM-500MK4EV (Elevated) 	SM-500MK4H (Hanging) 
SM-500MK4BS (Self Service) 	

Specifications

Capacity	1 / 3,000	Max 6kg	Max 15kg / 30lb	Max 30kg
Single Interval	1 / 3,000	e = 2g	e = 5g / 0.01lb	e = 10g
	1 / 6,000 or 1 / 7,500	e = 1g	e = 2g	e = 5g
Multi Interval	1 / 3,000	Max 3 / 6kg	Max 6 / 15kg	Max 15 / 30kg
		e = 1 / 2g	e = 2 / 5g	e = 5 / 10g

Model	SM-500MK4EB	SM-500MK4EP	SM-500MK4EV	SM-500MK4H	SM-500MK4BS
Display	LCD With Back Light (16 x 134 Dots)				
Number of Preset Keys	32	56 or 100	56 or 100	56	48,60,96 or 120
Memory Capacity	2MB (Std) 10MB (Max)				
Display Resolution	1 / 3,000 , 1 / 6,000 , 1 / 7,500				
Label Size	72mm (W) x 240mm (H) (Max)				
Label / Receipt Roll Diameter	105mm				
Paper Width	Label	72mm			
	Receipt	60mm			
Printing Speed	Label	Up To 150mm / Second*			
	Receipt	Up To 150mm / Second*			
Power Source	AC 100 / 110 / 220 / 230 / 240 Volts (50 / 60 Hz)				
Operating Temperature	-10 C° to + 40 C°				
Humidity	15% to 85% RH				
Standard Interface	RS-232C, Ethernet 10/100 Base T, PS2 Keyboard, Drawer Interface				
Net Weight	11.3kg	12.9kg	13.8kg	16.3kg	17.1kg

Options Wireless LAN (IEEE 802.11b/g), RS-485 (Factory Preset) Interface, Memory Expansion Boards (4MB / 8MB)

* To achieve maximum print speed, high sensitivity thermal paper is necessary. Contact DIGI for details.



• Specifications are subject to change without prior notice
 • Meet or exceed OIML Class III or NTEP HB44 requirements



SM-500MK4

Scale Printer

Robust, High Throughput System Scale



Pole Type

**Searching for
a New Balance**

TERAOKA WEIGH-SYSTEM PTE LTD.

4, Leng Kee Road, #05-02/03/04/05&11
 SIS Building SINGAPORE 159088
 TEL: +65-6472-2996
 SALES: +65-6378-5387
 FAX: +65-6863-4614
 E-MAIL: sales@teraoka.com.sg
 WEBSITE: http://www.teraoka.com.sg

TERAOKA SEIKO CO., LTD.

13-12 Kugahara 5-chome,
 Ohta-ku, Tokyo 146-8580, JAPAN
 TEL: +81-3-3752-2131
 FAX: +81-3-3752-2801
 E-MAIL: info@hq.digi.co.jp
 WEBSITE: http://www.digisystem.com

SM500MK4 / A / 0702

Scale To New Heights With The Powerful Features Of SM-500MK4

Fast Processing & Printing Speed

Significantly improve the weigh-to-print time with SM-500MK4's faster processor and printing speeds to increase throughput and operation efficiency, especially during busy times.



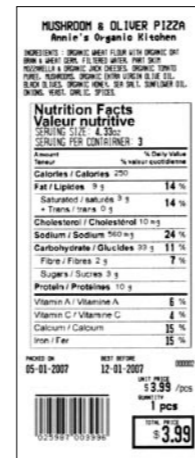
Wider Printing Capability

Useful information labels with ingredients, nutritional information and traceability data are easily possible with the wider print width and flexible label format.

Take advantage of the 72 mm printing width to print the same content on a shorter label, which translates to faster printing and increased print count within the thermal print head's life span.



Nutrifact Label
72mm Width



Nutrifact Label
60mm Width

More Memory Capacity

With standard memory of 2MB that can store up to 10,000 PLUs and upgradeable to a maximum of 10MB, the SM-500MK4 meets current demand for increased label information and also caters to your future needs for additional nutritional facts, ingredients or images.

Ease Of Operation

The spacious printer compartment, thermal print head gap space and simple label/receipt cassette allow easy and fast label or receipt changes. Even new operators can replace label/receipt rolls quickly with the optional standby cassette, a very useful tool during peak hours.

Floating Clerk System

Sales transactions of a customer can be captured at various scales when being served by the same clerk within the floating clerk network, printing a total receipt at the end of multiple transactions.

Security Features

To safeguard against unauthorized scale manipulation, security features include:

- Password Protection
- Price Override Lock
- Audit Trail
- Date & Time Stamp
- Wireless Network Security (WPA/WEP/LEAP)

Diagnostic Functions

Remote diagnostic capabilities include monitoring of scale status and firmware upgrade capability to save time and money by reducing on site maintenance.

Networking

The SM-500MK4 supports the following network interfaces:

- Ethernet 10/100 Base T (TCP/IP)
- RS-232C
- RS-485 (Optional)
- Wireless LAN IEEE.802.11b/g (Optional)



Scale Application Software

PLU data programming, preset key assignment, label format editor and user security can easily be done from a centralized location. Useful sales reports are readily available from the system for management analysis.



SM-500MK4 Variations

